

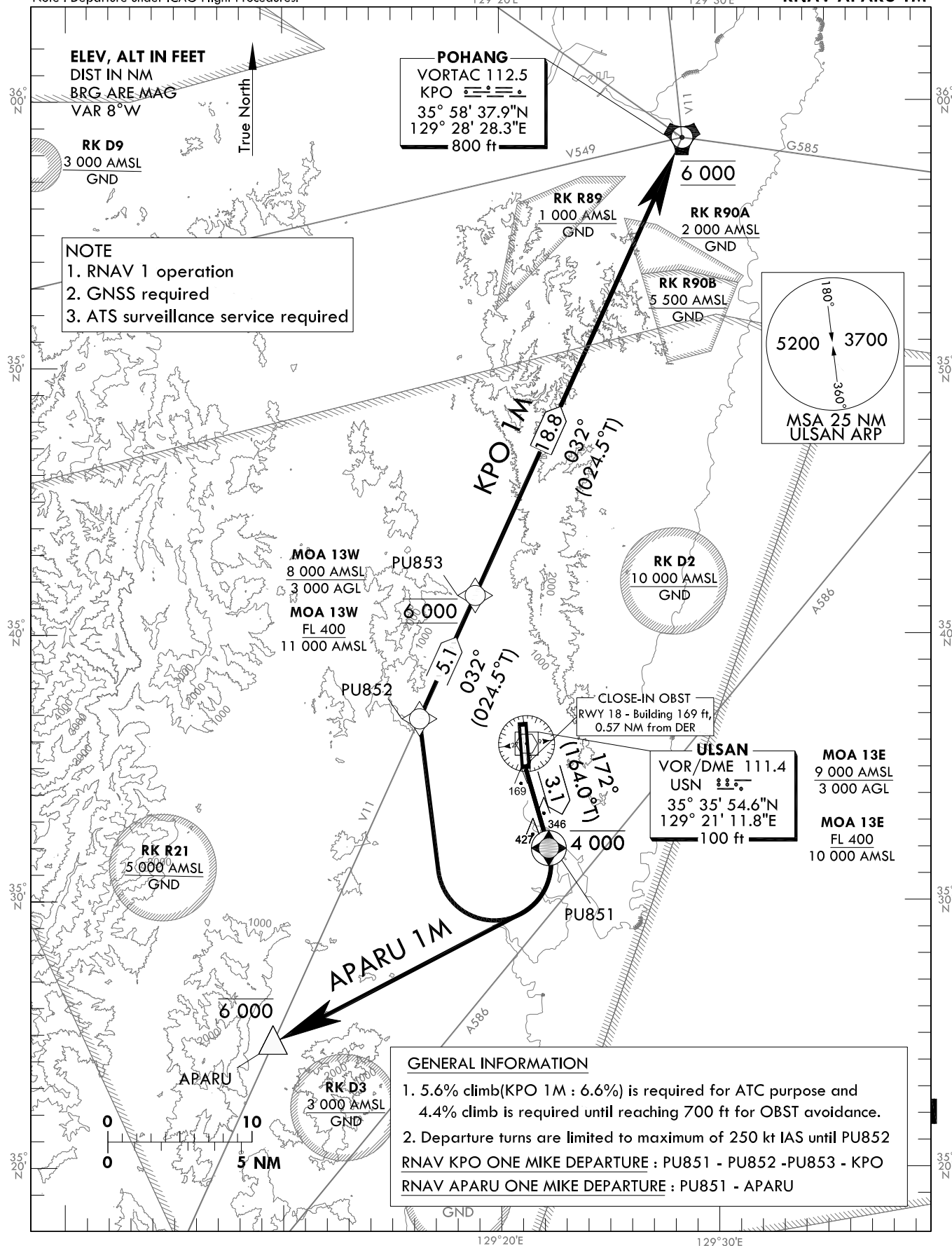
STANDARD DEPARTURE CHART
INSTRUMENT(SID) - ICAO

TRANSITION ALT 14 000
TRANSITION LVL FL 140

POHANG DEP 120.2
232.4
ULSAN TWR 118.75

ULSAN/Ulsan(RKPU)
RWY 18
RNAV KPO 1M
RNAV APARU 1M

Note : Departure under ICAO Flight Procedures.



Change : Information of take off procedure.

OFFICE OF CIVIL AVIATION

AIRAC AIP AMDT 11/17
Effective : 1600UTC 6 DEC 2017

ULSAN/Ulsan(RKPU)
RWY 18

RNAV KPO 1M, RNAV APARU 1M

AERONAUTICAL DATA TABULATION

Standard Instrument Departure Procedure Coding Tables

RNAV KPO 1M

| Serial Number | Path Descriptor | Waypoint Identifier | Fly-over | Course/Track °M(°T) | Distance (NM) | Turn direction | Altitude (ft) | Speed (kt) | Coordinates | VPA/RDH | Navigation specification | Remarks |
|---------------|-----------------|---------------------|----------|---------------------|---------------|----------------|---------------|------------|----------------------|---------|--------------------------|---------|
| 001 | CF | PU851 | Y | 172(164.0) | 3.1 | - | -4 000 | -250 | 353159.3N 1292212.1E | - | RNAV 1 | - |
| 002 | DF | PU852 | - | - | - | R | - | -250 | 353651.2N 1291616.8E | - | RNAV 1 | - |
| 003 | TF | PU853 | - | 032(024.5) | 5.1 | - | @6 000 | - | 354128.6N 1291851.5E | - | RNAV 1 | - |
| 004 | TF | KPO | - | 032(024.5) | 18.8 | - | @6 000 | - | 355837.9N 1292828.3E | - | RNAV 1 | - |

RNAV APARU 1M

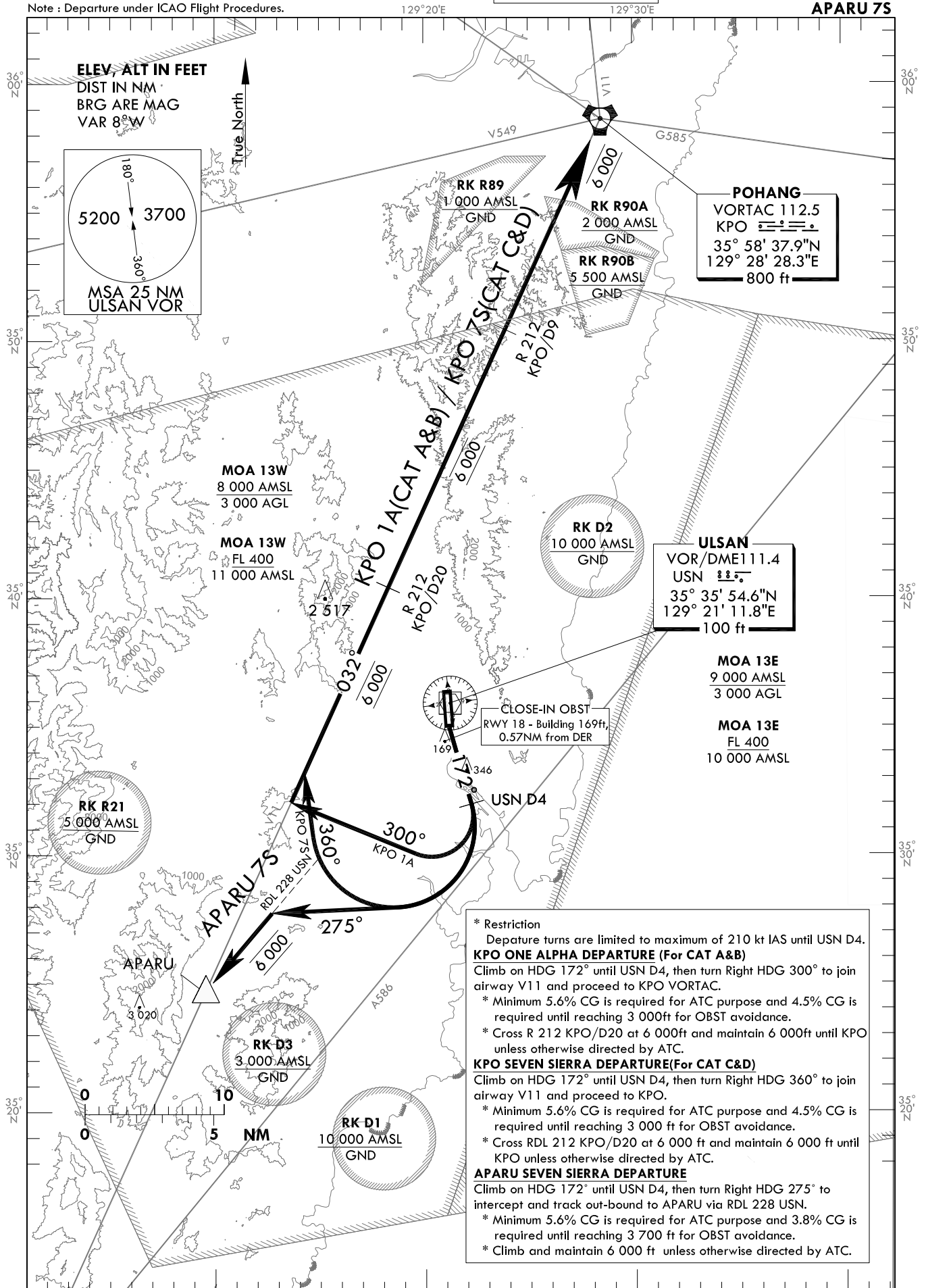
| Serial Number | Path Descriptor | Waypoint Identifier | Fly-over | Course/Track °M(°T) | Distance (NM) | Turn direction | Altitude (ft) | Speed (kt) | Coordinates | VPA/RDH | Navigation specification | Remarks |
|---------------|-----------------|---------------------|----------|---------------------|---------------|----------------|---------------|------------|----------------------|---------|--------------------------|---------|
| 001 | CF | PU851 | Y | 172(164.0) | 3.1 | - | -4 000 | -250 | 353159.3N 1292212.1E | - | RNAV 1 | - |
| 002 | DF | APARU | - | - | - | R | -6 000 | - | 352442.1N 1290932.1E | - | RNAV 1 | - |

TRANSITION ALT 14 000
TRANSITION LVL FL 140

| | |
|------------|--------|
| POHANG DEP | 120.2 |
| | 232.4 |
| ULSAN TWR | 118.75 |

**ULSAN/Ulsan(RKPU)
RWY 18
KPO 1A, KPO 7S
APARU 7S**

Note : Departure under ICAO Flight Procedures.



Change : Establishment of KPO 1A.

INTENTIONALLY

LEFT

BLANK

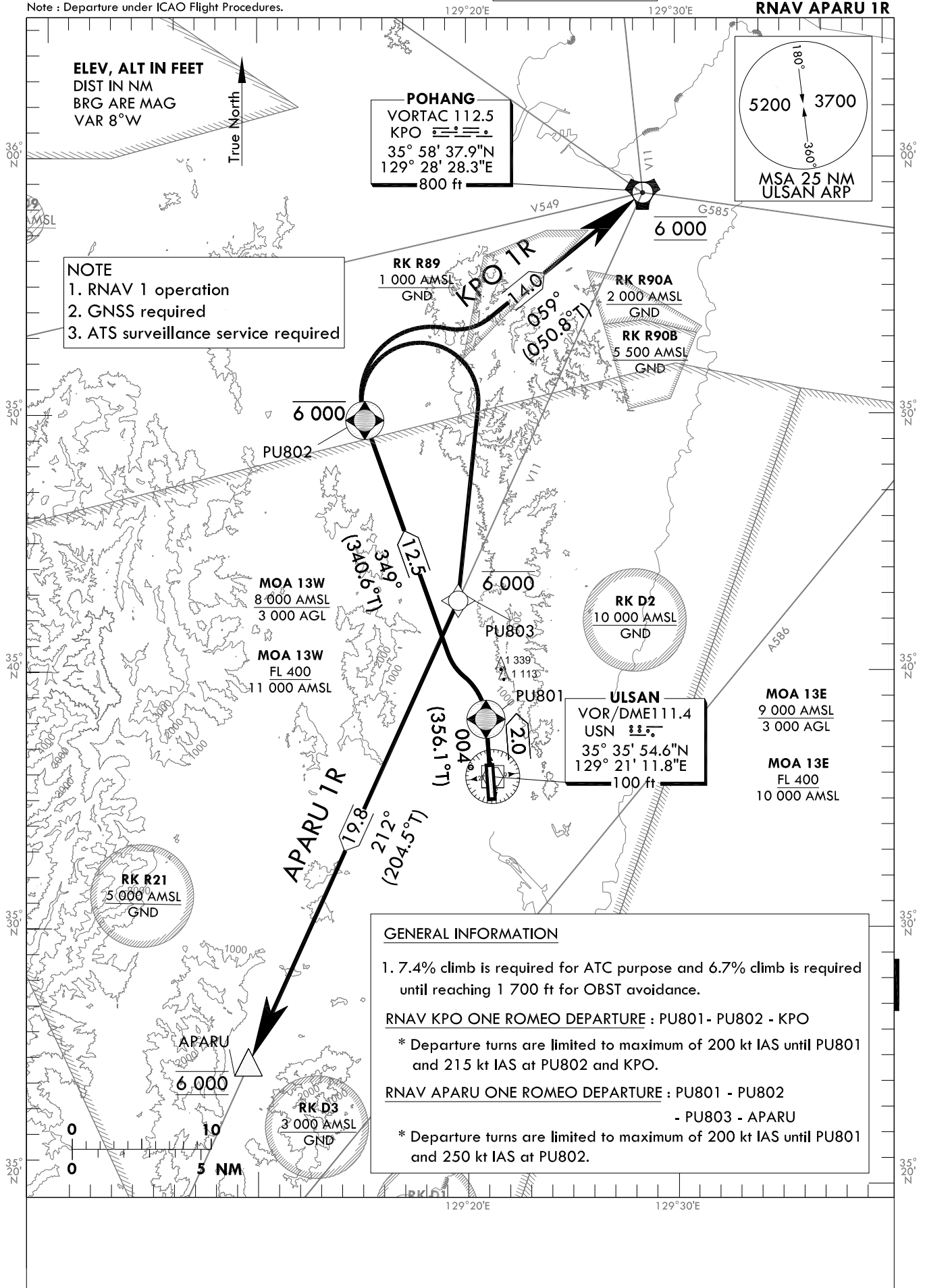
**STANDARD DEPARTURE CHART
INSTRUMENT(SID) - ICAO**

TRANSITION ALT 14 000
TRANSITION LVL FL 140

POHANG DEP 120.2
232.4
ULSAN TWR 118.75

ULSAN/Ulsan(RKPU)
RWY 36
RNAV KPO 1R
RNAV APARU 1R

Note : Departure under ICAO Flight Procedures.



Change : Information of take off procedure.

ULSAN/Ulsan(RKPU)
RWY 36
RNAV KPO 1R, RNAV APARU 1R

AERONAUTICAL DATA TABULATION

Standard Instrument Departure Procedure Coding Tables

RNAV KPO 1R

| Serial Number | Path Descriptor | Waypoint Identifier | Fly-over | Course/Track °M(°T) | Distance (NM) | Turn direction | Altitude (ft) | Speed (kt) | Coordinates | VPA/ RDH | Navigation specification | Remarks |
|---------------|-----------------|---------------------|----------|------------------------|------------------|----------------|------------------|---------------|----------------------|-------------|--------------------------|---------|
| 001 | CF | PU801 | Y | 004(356.1) | 2.0 | - | - | -200 | 353808.8N 1292053.5E | - | RNAV 1 | - |
| 002 | CF | PU802 | Y | 349(340.6) | 12.5 | - | -6 000 | -215 | 354948.4N 1291508.6E | - | RNAV 1 | - |
| 003 | TF | KPO | - | 059(050.8) | 14.0 | - | @6 000 | -215 | 355837.9N 1292828.3E | - | RNAV 1 | - |

RNAV APARU 1R

| Serial Number | Path Descriptor | Waypoint Identifier | Fly-over | Course/Track °M(°T) | Distance (NM) | Turn direction | Altitude (ft) | Speed (kt) | Coordinates | VPA/ RDH | Navigation specification | Remarks |
|---------------|-----------------|---------------------|----------|------------------------|------------------|----------------|------------------|---------------|----------------------|-------------|--------------------------|---------|
| 001 | CF | PU801 | Y | 004(356.1) | 2.0 | - | - | -200 | 353808.8N 1292053.5E | - | RNAV 1 | - |
| 002 | CF | PU802 | Y | 349(340.6) | 12.5 | - | -6 000 | -250 | 354948.4N 1291508.6E | - | RNAV 1 | - |
| 003 | DF | PU803 | - | - | - | R | -6 000 | - | 354245.9N 1291934.7E | - | RNAV 1 | - |
| 004 | TF | APARU | - | 212(204.5) | 19.8 | - | @6 000 | - | 352442.1N 1290932.1E | - | RNAV 1 | - |

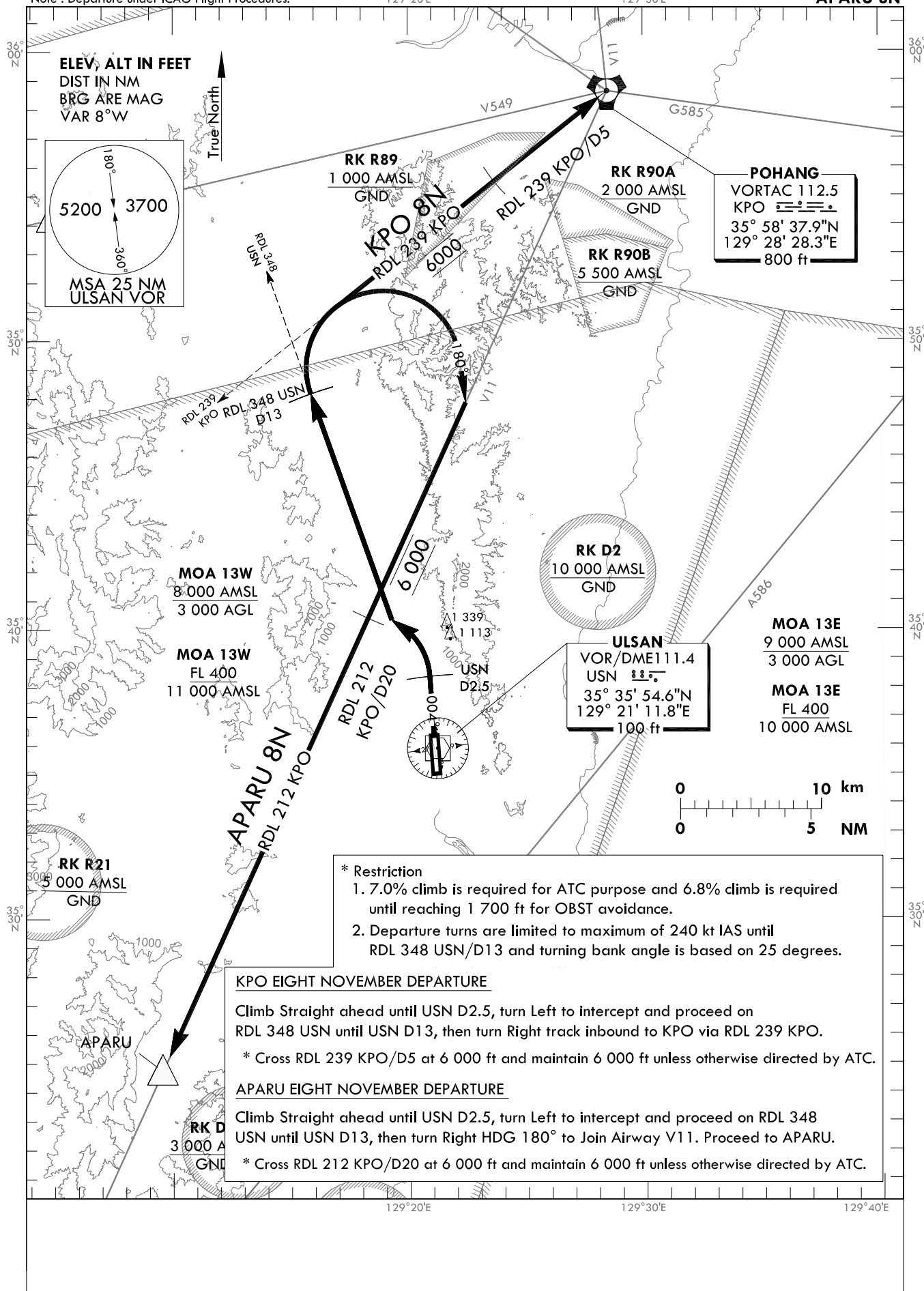
STANDARD DEPARTURE CHART
INSTRUMENT(SID) - ICAO

TRANSITION ALT 14 000
TRANSITION LVL FL 140

POHANG DEP 120.2
232.4
ULSAN TWR 118.75

ULSAN/Ulsan(RKPU)
RWY 36
KPO 8N
APARU 8N

Note : Departure under ICAO Flight Procedures.



Change : Information of take off and departure procedure.

INTENTIONALLY

LEFT

BLANK